



# GAT MONTHLY MEMBERSHIP PROGRESS REPORT

Results as of: 11/30/2022

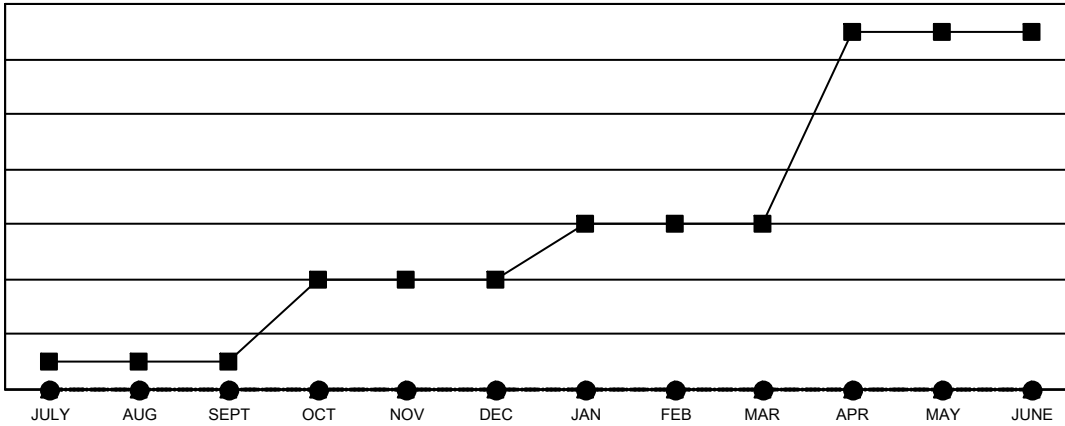
Multiple District 5

LOCATION: NORTH DAKOTA

Clubs			
RESULTS FOR 2022-2023			
QUARTER	NEW CLUB GOAL	NEW CLUBS	DROPPED CLUBS
JULY/AUG/SEPT	1	0	1
OCT/NOV/DEC	3	0	0
JAN/FEB/MAR	2	0	0
APR/MAY/JUNE	7	0	0

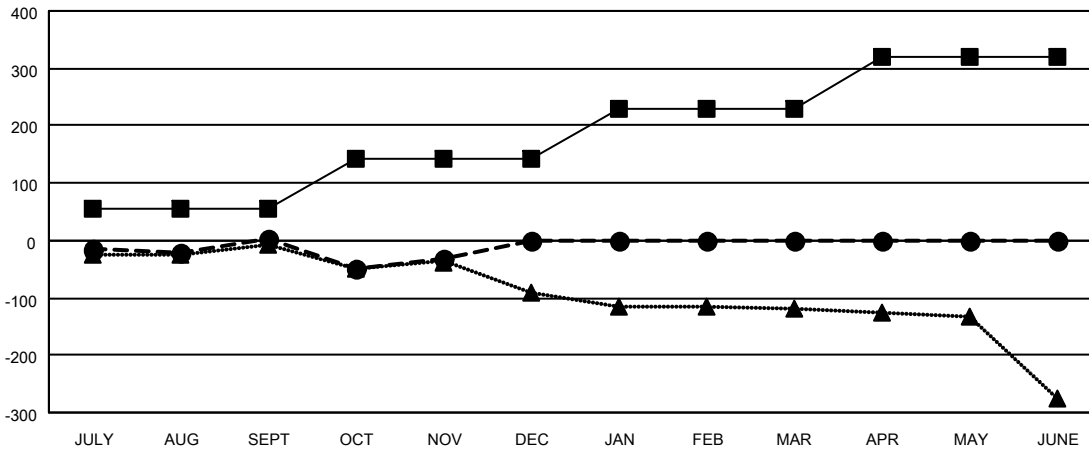
Members			
RESULTS FOR 2022-2023			
QUARTER	MEMBER GROWTH NET GOAL	MEMBER GROWTH ACTUAL	DROPPED MEMBERS ACTUAL (including transfers)
JULY/AUG/SEPT	55	136	99
OCT/NOV/DEC	88	114	125
JAN/FEB/MAR	86	0	0
APR/MAY/JUNE	91	0	0

GOALS AND ACTUAL NEW CLUBS CUMULATIVE



- CURRENT YEAR GOALS FOR NEW CLUBS
- CURRENT YEAR ACTUAL NEW CLUBS
- ▲- LAST YEAR ACTUAL NEW CLUBS

GOALS AND ACTUAL MEMBERS CUMULATIVE



- MEMBER GROWTH NET GOAL
- MEMBER GROWTH ACTUAL
- ▲- LAST YEAR MEMBERSHIP ACTUAL

DROPPED CLUBS: 1	91 CLUBS OF 293 ADDED 1 OR MORE NEW MEMBERS	<b>GENDER DISTRIBUTION</b>
<b>DROPPED MEMBERS</b>	<a href="#">CLICK HERE FOR CUMULATIVE MEMBERSHIP DATA</a>	MALE 4,518 (70.30%)
DECEASED 38		FEMALE 1,908 (29.69%)
CLUB CANCELLED 22		NON BINARY 0 (0.00%)
OTHER 164		PREFER NOT TO ANSWER 1 (0.02%)
<b>TOTAL 224</b>		<b>TOTAL FAMILY UNIT MEMBERS 1,017</b>
		FAMILY MEMBERS PAYING HALF DUES 515